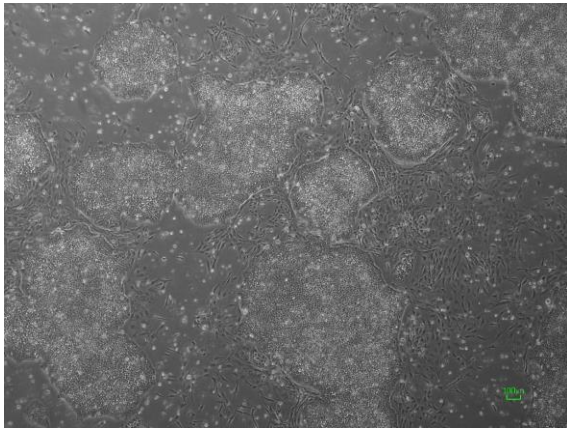
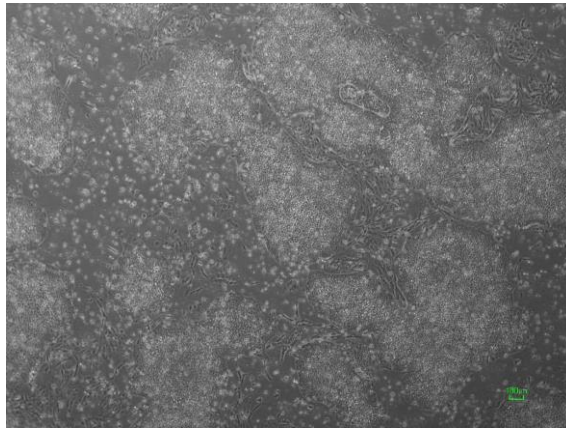


【 CiRA-jk-0034 】 Morphology of iPSC colonies

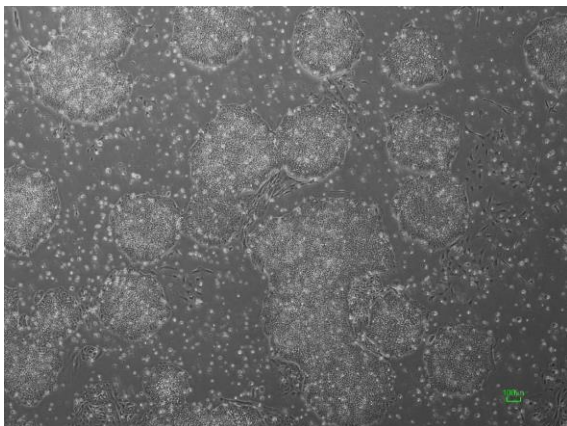
CiRA -jk-0034-A: passage-2



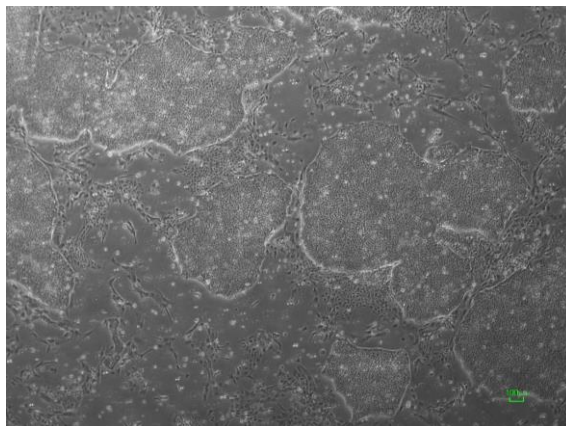
CiRA-jk-0034-B: passage-2



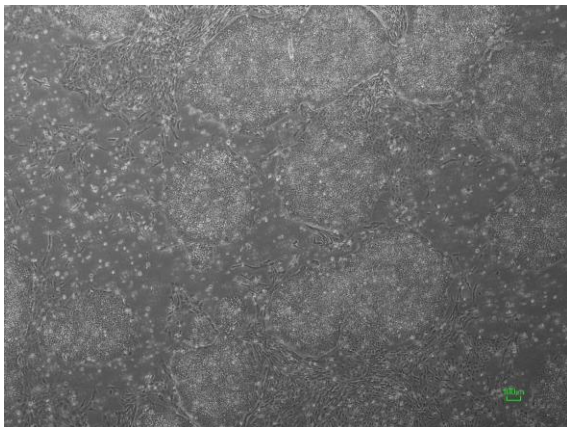
CiRA-jk-0034-C: passage-2



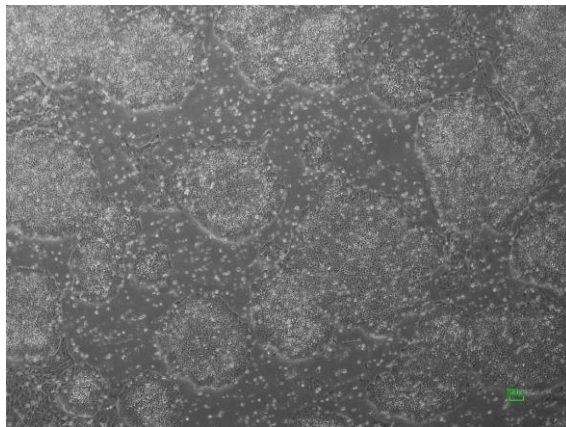
CiRA-jk-0034-D: passage-2



CiRA-jk-0034-E: passage-2



CiRA-jk-0034-F: passage-2



(All images were captured at 4x magnification)